

! VERY IMPORTANT: BEFORE TO START ...

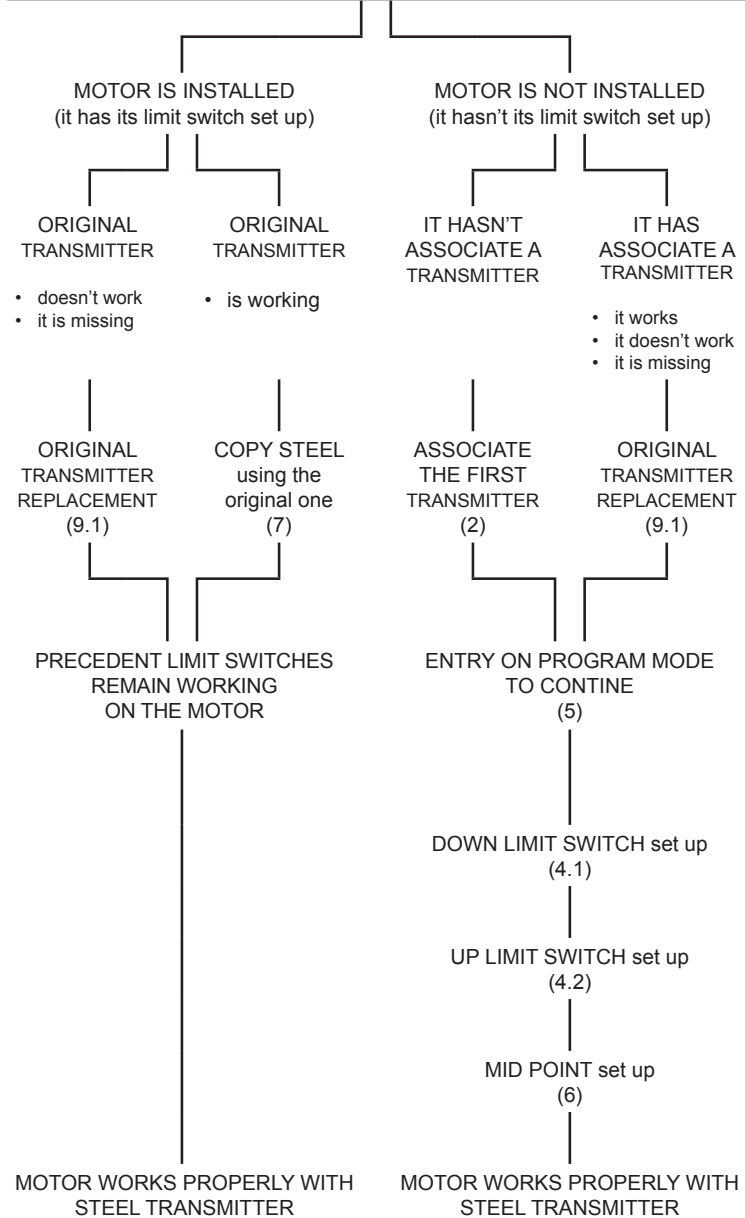


PLEASE VERIFY IN ADVANCE, WHICH IS THE VERSION OF YOUR MOTOR.
AFTER THAT, PROCEED AS THE NEXT DIAGRAM TO CHANGE AN OLD
TRANSMITTER OR TO START WITH THE RIGHT PROCEDURE IN EACH CASE
YOU CAN FIND THE VERSION ON THE MOTOR HEAD LABEL

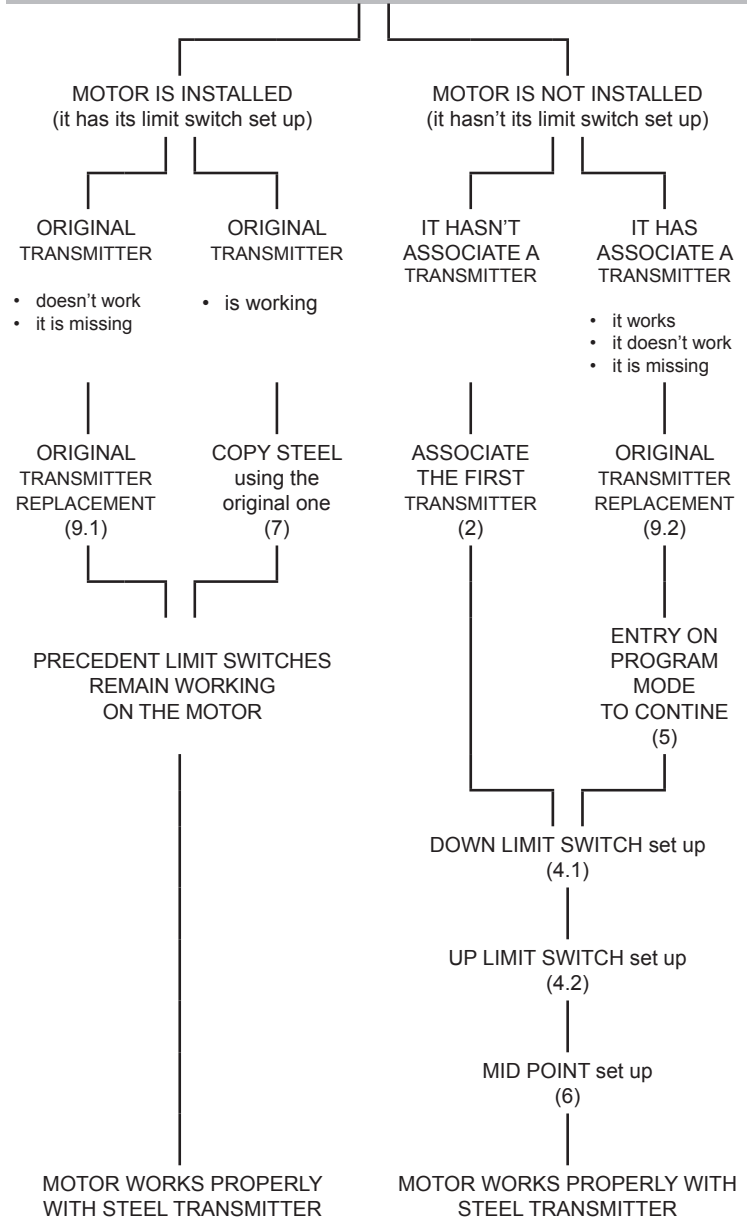
REM 2 916
Rev. 1.4
or previous

REM 2T 916
Rev. 1.5
or later

REM 2 916
Rev. 1.4
or previous

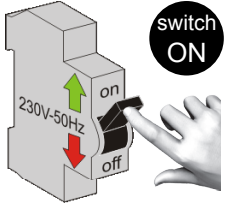


REM 2T 916
Rev. 1.5
or later

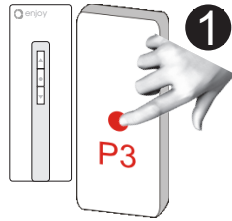


JE50RA-916-STEEL_eng_ver.REM 2 & REM 2T

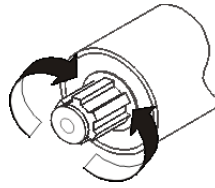
2 FIRST EMITTER LEARNING (main transmitter) through a power switch OFF/ON



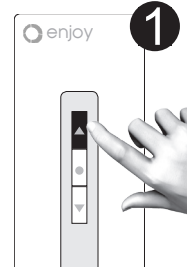
Connect the motor as the wires connect way above. Switch power ON



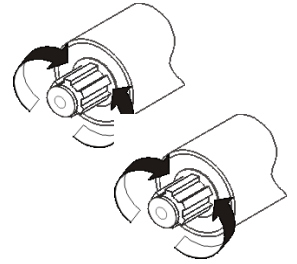
Within 30 seconds, press **ONE** time **P3** button (back side)



Then the motor will make a single tilt movement, indicating that it is ready to learning the emitter



Within 5 seconds, press **ONE** time **UP** button



Then the motor will make two tilt movement as Confirmation that first emitter has been learned

NOTE: to learn the first emitter, you must connect only one motor on the power or at least be sure that the switch OFF / ON is being done on the motor which you want to learn the emitter. If more than one motor are connected to the same power line and the switch OFF / ON is done on them, all of these motors will learn the emitter over is pressed the P3 button.

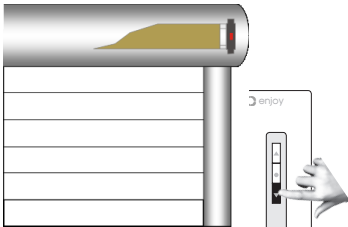
4 LIMIT SWITCH ADJUSTMENT - IMPORTANT

When we are programming the limit switch points (lower and upper), we can find that the direction of the arrows on the remote control does not correspond with the actual direction in which the roller shutter is moving. It means, is possible press UP button and the roller shutter is moving DOWNWARDS and press DOWN button and the roller shutter can moves UPWARDS. Don't worry for it, after set up both limit switches, motor will change by itself to the right direction.

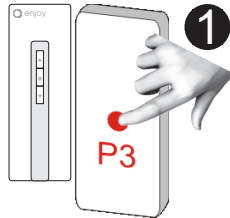
Otherwise, you can press Up button and motor can move UPWARDS, so it means that motor movement are in correspondence with emitter buttons. In any case, please follow the instructions above.

NOTE: always is necessary start on the lower limit switch, it is roller shutter in its closed position

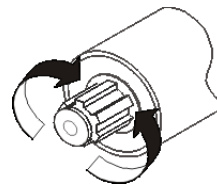
4-1 LIMIT SWITCH ADJUSTMENT - DOWN LIMIT SWITCH (roller shutter closed)



Move the roller shutter downwards and STOP the motor when it reaches the LOWER wished limit point.

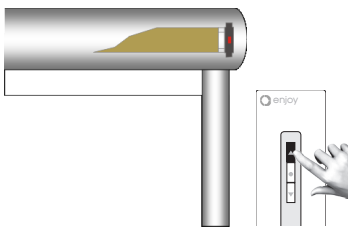


Press **ONE** time **P3** button (located on the back of the emitter)

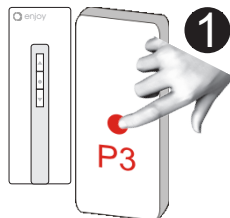


Then the motor will make a single tilt movement as Confirmation that LOWER limit switch has been set up

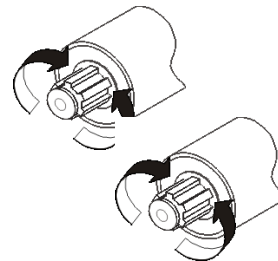
4-2 LIMIT SWITCH ADJUSTMENT - UP LIMIT SWITCH (roller shutter opened)



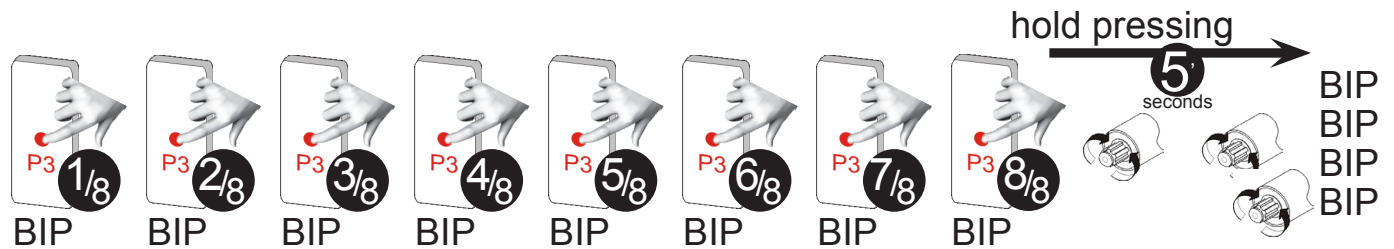
Move the roller shutter upwards and STOP the motor when it reaches the UPPER wished limit point.



Press **ONE** time **P3** button (located on the back of the emitter)

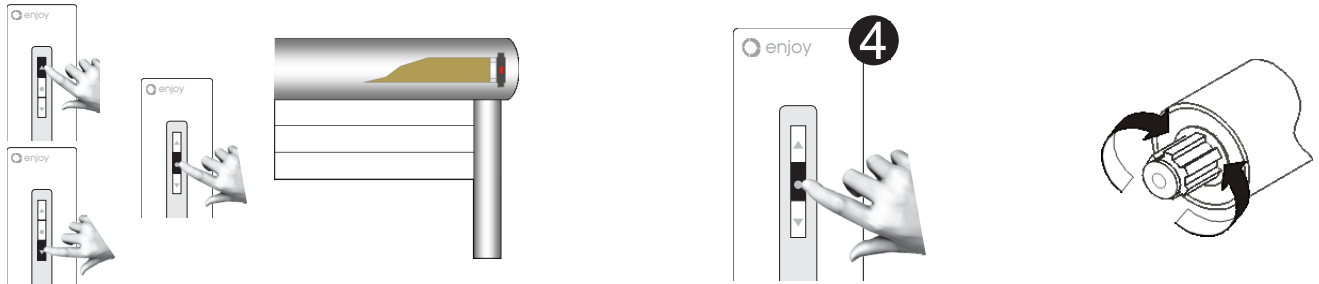


Then the motor will make two tilt movement as Confirmation that UPPER limit switch has been set up



Press **EIGHT** times the **P3** button (located on the back of the emitter). Be sure to **HOLD** pressing on the EIGHT time.

After 5 seconds holding P3 buttons, motor will make two tilt movement as Confirmation that limit switch UPPER and LOWER has been deleted

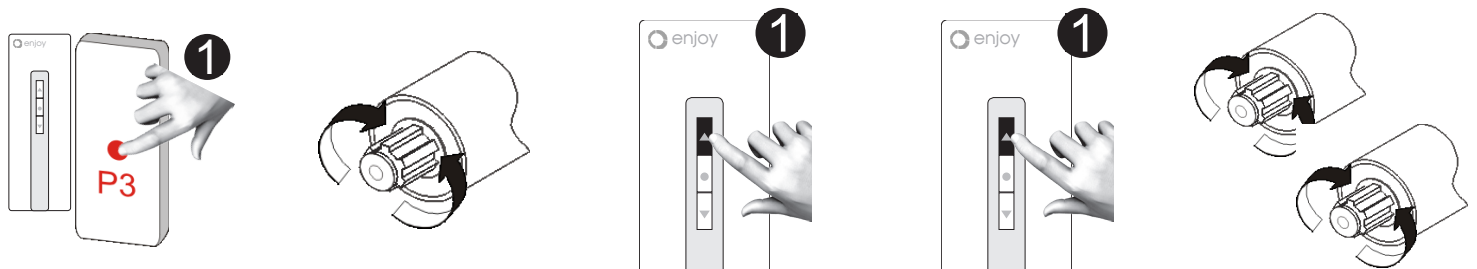


Move the roller shutter downward or upward and when it reaches the desire position, stop the motor (it can be any point between up and down limit switches)

Press **FOUR** times **STOP** button

Then the motor will make a single tilt movement as Confirmation that THIRD limit switch has been set up

Note: After programmed the midpoint, the shutter will goes to this point, pressing and keep pressing the Stop button till the motor start to move (± 4 sec)
If is needed change the middles position, you can make it as the above instructions without cancel the precedent position (just only make a new one)



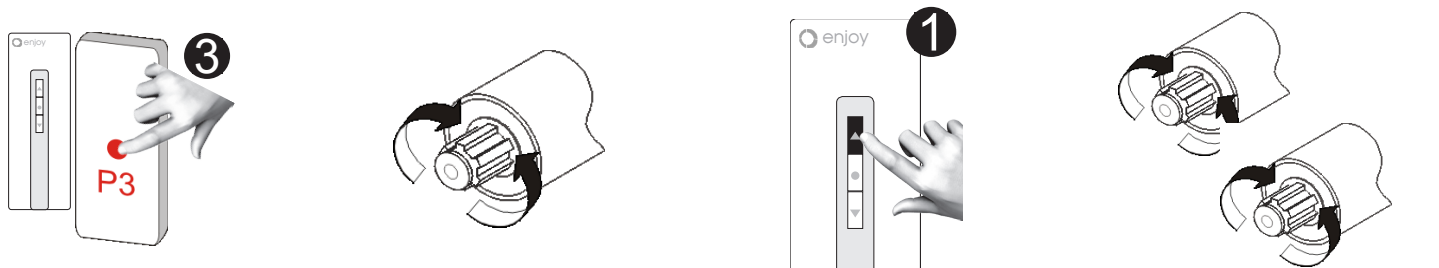
Original Emitter:
Press **ONE** time the **P3** button (located on the back of the emitter)

Then the motor will make a single tilt movement as Confirmation that it is ready to learn a new emitter

Original Emitter:
press **ONE** time **UP** button

New Emitter:
press **ONE** time **UP** button

Then the motor will make two tilt movement as Confirmation that new emitter has been learned



Emitter to delete:
Press **THREE** times the **P3** button (located on the back of the emitter)

Then the motor will make a single tilt movement as Confirmation that it is ready to delete the emitter

Emitter to delete:
Immediately press **ONE** time **UP** button

Then the motor will make two tilt movement as Confirmation that emitter has been deleted

9-1 REPLACEMENT THE FIRST EMITTER (Main emitter) through the Switch Power Off/On

switch OFF/ON

2" seconds 2' minutes BIP

4

230V-50Hz on off

230V-50Hz on off

P3

Switch power OFF, in the motor which we want replace the MAIN transmitter. After 5 seconds, switch power ON

Between 2 seconds and 2 minutes (and six seconds) after the power ON, the motor will make a single tilt movement as confirmation that it is ready to learn a new Main

On the new Main Emitter: Press **FOUR** times the **P3** button (located on the back of the emitter)

Then the motor will make two tilt movement as confirmation that the new Main emitter has been learned

During the replacement process:

- Any order send by a transmitter will stopped the replacement process (even if the order is coming from a transmitter not learned with the motor. It is enough with the same frequency).

When we replace the MAIN transmitter:

- Old main transmitters doesn't work with the motor.
- Old transmitters copied on the motor, remain working on the motor
- The limit switches set up remain memorized on the motor.

9-2 REPLACEMENT THE FIRST EMITTER (Main emitter) through the Switch Power Off/On, if in the motor has not been seted up the limit switches

switch OFF/ON

BIP BIP BIP BIP BIP BIP BIP

1

switch OFF/ON

2" seconds 2' minutes BIP

4

230V-50Hz on off

230V-50Hz on off

P3

Switch power OFF, in the motor which we want replace the MAIN transmitter. After 5 seconds, switch power ON Motor will emit till SEVEN BIPs

On the new Main Emitter: Press **ONE** time the **P3** button (located on the back of the emitter)

Switch power OFF, in the motor which we want replace the MAIN transmitter. After 5 seconds, switch power ON

Between 2 seconds and 2 minutes (and six seconds) after the power ON, the motor will make a single tilt movement as confirmation that it is ready to learn a new Main

On the new Main Emitter: Press **FOUR** times the **P3** button (located on the back of the emitter)

Then the motor will make two tilt movement as confirmation that the new Main emitter has been learned

10 FULL RESET (DELETE ALL TRANSMITTTTERS, LIMIT SWITCHES SET UP, ...) through any transmitter learned on the motor

switch OFF/ON

1 2 3 4 5 6 7 8 9 10

BIP BIP BIP BIP BIP BIP BIP BIP BIP BIP

5 seconds

hold

230V-50Hz on off

switch OFF/ON

Then the motor will make two tilt movement as Confirmation that a FULL RESET has been done

Press **TEN** times the **P3** button (located on the back of the emitter). Be sure to HOLD pressing on the TEN time.

NOTE: as soon as the motor confirm the total canecllation, the motor returns to the original parameters. Will be necessary start from the point no. 2 to learn a Main transmettrers.

WHAT TO DO IF?

- Transmitter (learned on the motors) doesn't work:
 - The battery is consumed, replaced it by a new one.
 - Be sure that motor is powered ON.
 - Check if any interference in disturbing the signal.
- Motor is working Step by Step (deadman):
 - No limit switches are setted up on the motor. Set up them (up and down). After that motor will work in automatic mode.
- Up and Down buttons are not in correspondende with the motor movement:
 - If you have not set up the limit switch, do it, starting with the down limit switch.
 - If limit switches have been setted up, you have to delete it (point 5) and set up agin (point 4-1 and 4-2).
- Atter a power OFF/ON, the motor is emitting till SEVEN BIPs:
 - Limit switches have been not setted up, please set up them (points 4-1 and 4-2).
- Main transmitter doesn't work or it is missing:
 - Replace the Main transmitter, follwong the instructions (point 9-1 or 9-2).
- Roller shutter is stopping in a wrong point:
 - Do a full movement in ecah direction (up and down). After that check again. If motor still not stopping on the desires point, will be necessary delete its limit switch (point 5) and does it again (point 4-1 and 4-2).