



ARES

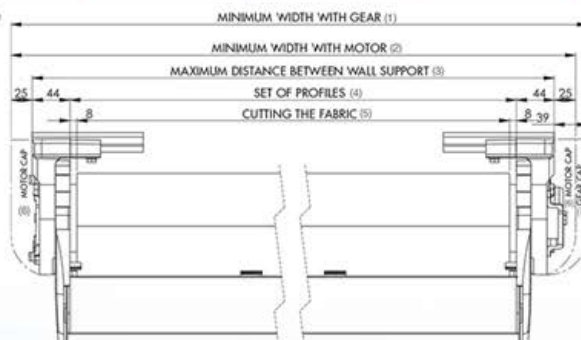
Box System



CUTTING INSTRUCTIONS

Option	Maximum distance between wall supports (cm)	Cutting the profiles (cm)	Cutting the tube (cm)	Cutting the fabric (cm)	Rolling margins (cm)
Motor	5,0	13,8	Ø 70: 11,5	15,4	Ø 70: 0,8 / 3,2*
			Ø 78: 14,5		Ø 78: Centred
Gear	7,3	16,1	16,2	17,7	Centred

* The biggest figure corresponds to the side where the motor is going to be assembled.



MINIMUM WIDTHS (m)*

Arms projection	Minimum width
1,50	1,79
1,75	2,05
2,00	2,38
2,25	2,63
2,50	2,88
2,75	3,21
3,00	3,46
3,25	3,71

* With two Premium retractable arms

MOTORIZATION

	Arms projection in meters	Width en meters			
		2,00	3,00	4,00	5,00
78 mm tube	1,50	ARGOS 40	ARGOS 40	ARGOS 40	ARGOS 40
	1,75		ARGOS 40	ARGOS 40	ARGOS 40
	2,00		ARGOS 50	ARGOS 50	ARGOS 50
	2,25		ARGOS 50	ARGOS 50	ARGOS 50
	2,50		ARGOS 50	ARGOS 50	ARGOS 50
	2,75			ARGOS 50	ARGOS 50
	3,00			ARGOS 50	ARGOS 50
	3,25			ARGOS 50	ARGOS 50

ARES

Box System

Hidden fabric roll by the frontal profile when the box is open.

Motor removal without having to take apart or down the fabric and tube set.

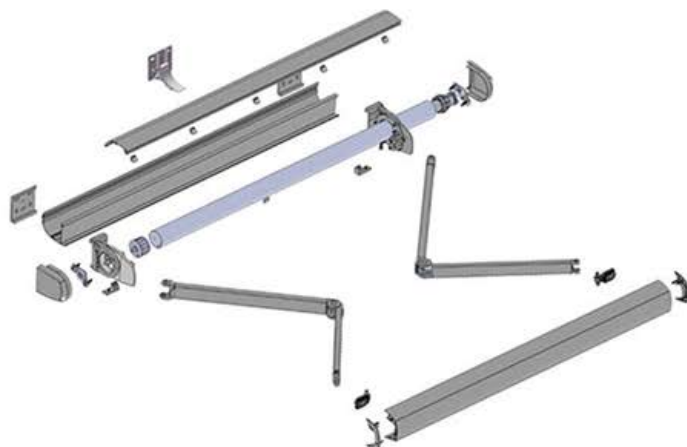
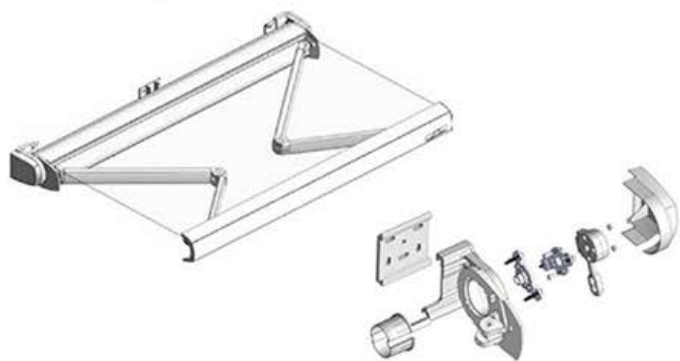
Officially approved product fulfilling Class II in the following measures:

5,00 m x 3,00 m with wall to wall or wall to ceiling installation;

6,00 m x 3,00 m with central support and wall to wall installation.

In order to improve the box closing, it is available an adjustment of the elbows' height (being the arm closed).

→ System parts



→ Assembly example for Ares with 4,00 m width and 2,00 m projection. White colour. Ø78 tube

DESCRIPTION	CODE	UDS.
EXAMPLE FOR MOTORIZED ARES		
Set of profiles for Ares box	8013-405	4 m
Set of Ares box	8013-530	1
Set of Premium retractable arms (2,00 m)	8008-805	1
Galvanized round tube with ogive	8003-20	4 m
Round cap of 78 mm with round pivot of 12x40 mm in aluminum	8002-44	1
Argos 50 motor	6005-105	1
Adapter for 78 mm tube with ogive	6007-51	1
Cronos SV remote control	6009-120	1
Cronos SV sun and wind sensor	6009-116	1

DESCRIPTION	CODE	UDS.
EXAMPLE FOR ARES WITH GEAR		
Set of profiles for Ares box	8013-405	4 m
Set of Ares box	8013-530	1
Set of Premium retractable arms (2,00 m)	8008-805	1
Galvanized round tube with ogive	8003-20	4 m
Round cap of 78 mm with round pivot of 12x40 mm in aluminum	8002-44	1
Driving round cap of 78 mm with square pivot of 13x63 mm, in aluminum	8002-33	1
Ciclon gear 1/11, 90 mm eye, rolled	8001-191	1
Lacquered handcrank, zinc plated steel hook (1,50 m)	8009-10	1
Polyamide handle lock	7010-39	1

Recommendations

5,00 m maximum line recommended per 3,00 m of projection.

Textile inclination (Wall and ceiling support): from 3° till 76°.

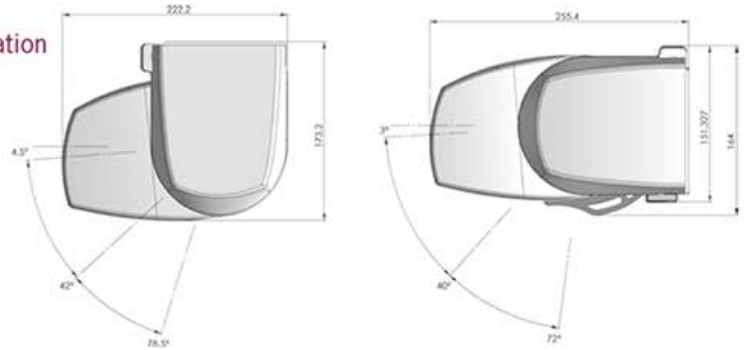
You may use Ø 78 mm tube.

Assembly option without ceiling support (up to 5,00 m width and 3,00 m projection).

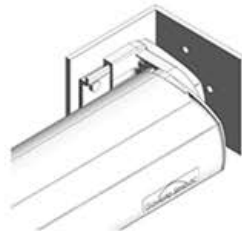
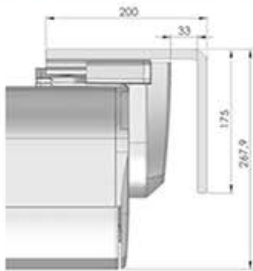
Central support



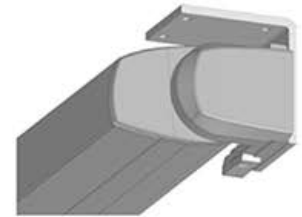
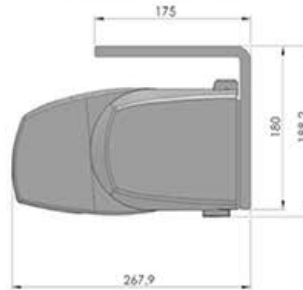
Maximum inclination



Wall to wall adjustment



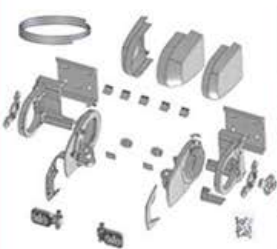
Ceiling adjustment



DESCRIPTION			
Set of profiles for Ares box		1	L/m
8013-405/415/1113 425/435	White		4/5/5,8/6/7
8013-417/1115/437	Black		5/5,8/7
8013-416/1116/436	Silver		5/5,8/7
8013-418/1117/438	Bronze		5/5,8/7
8013-423/1118/443	Grey 7011		5/5,8/7
8013-518/1119/519	Brown 8014		5/5,8/7
8013-422/1120/442	Beige 1013		5/5,8/7



DESCRIPTION / DESCRIPTION		
Ares central support <i>Support central Ares</i>		1
8013-544	White / Blanc	
8013-545	Black / Noir	
8013-549	Silver / Argent	
8013-551	Bronze	
8013-1166	Grey 7011 / Gris 7011	
8013-1165	Brown 8014 / Brun 8014	
8013-550	Beige 1013	



DESCRIPTION / DESCRIPTION		
Set of Ares box <i>Endemble Kit Ares</i>		1
8013-530	White / Blanc	
8013-532	Black / Noir	
8013-531	Silver / Argent	
8013-533	Bronze	
8013-538	Grey 7011 / Gris 7011	
8013-861	Brown 8014 / Brun 8014	
8013-537	Beige 1013	

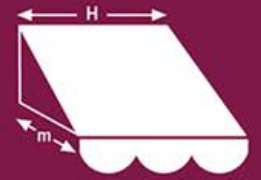


DESCRIPTION / DESCRIPTION		
Ares ceiling support <i>Support toit Ares</i>		1
8013-511	White / Blanc	



DESCRIPTION / DESCRIPTION		
Ares wall to wall support <i>Support mur à mur Ares</i>		1
8013-512	White / Blanc	

EN-13561:2004 Wind resistance selection abacus / *Abaque de résistance au vent*



EN-1933:1999 Water resistance selection abacus / *Abaque de résistance à l'eau*

2,00	2,50	3,00	3,50	4,00	4,50	5,00	5,50	6,00	H m
IM	IM	IM	IM	1*	1*	1*	1*	1*	3,25
IM	IM	IM	IM	2*	2*	2*	2*	2*	
IM	IM	IM	2	2	2	2	2*	2*	3,00
IM	IM	IM	2	2	2	2	2*	2*	
IM	IM	IM	2	2	2	2	2*	2*	2,75
IM	IM	IM	2	2	2	2	2*	2*	
IM	IM	3	3	3	3	2	2*	2*	2,50
IM	IM	2	2	2	2	2	2*	2*	
IM	IM	3	3	3	3	3	2*	2*	2,25
IM	IM	2	2	2	2	2	2*	2*	
IM	3	3	3	3	3	3	2*	2*	2,00
IM	2	2	2	2	2	2	2*	2*	
IM	3	3	3	3	3	3	2*	2*	1,75
IM	2	2	2	2	2	2	2*	2*	
3	3	3	3	3	3	3	2*	2*	1,50
2	2	2	2	2	2	2	2*	2*	

* Assembled with central support / *Montage avec support central*

- **Class 0 / Classe 0**
It does not fulfil the requirements
Il n'est pas homologué
- **Class 1**
- **Class 2**
- **Class 3**
- **IM Impossible to assemble**

WIND RESISTANCE		
Class	Maximum Wind Speed	Pressure
1	28 Km/h	40 N/m ²
2	38 Km/h	70 N/m ²
3	49 Km/h	110 N/m ²

WATER FLOOD RESISTANCE	
Class	Water Flood Resistance
1	17 l / m ² x h
2	56 l / m ² x h

* NOTE: The different classes have been fulfilled according to the described conditions at initial tests.



CROCI AUSTRALIA

88-90 Derby Street, Pascoe Vale, 3044
Tel: (03) 9354 4777 Fax: (03) 93541944

sales@croci.com.au
www.croci.com.au



For more information:

